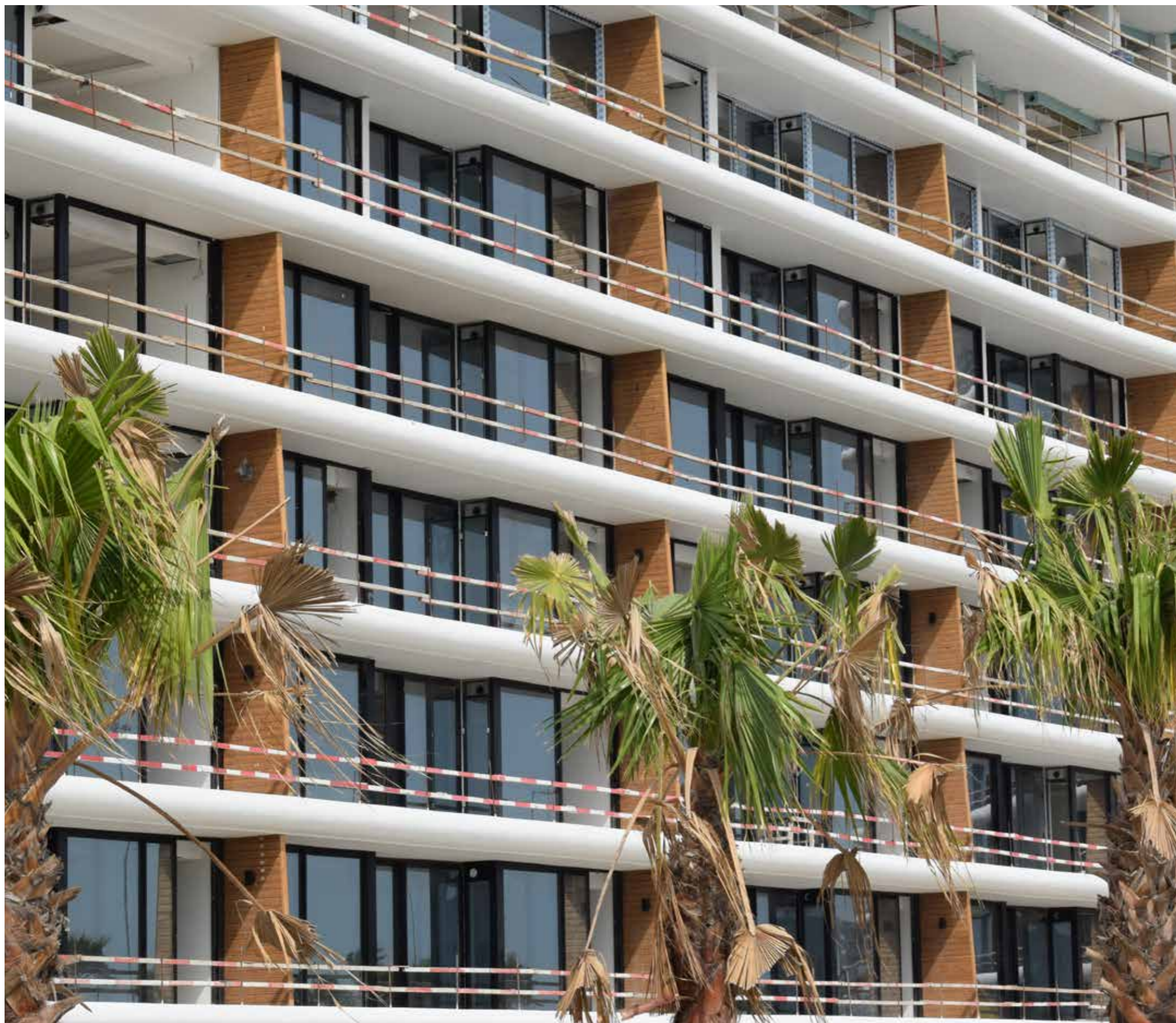


ESSENCE OF DILMUNIA



-PROGRESS NEWSLETTER-
SPRING 2017





WELCOME

TO THE SPRING 2017 ESSENCE OF
DILMUNIA NEWSLETTER

A MESSAGE FROM OUR CHAIRMAN

Introductory Message 4

CONSTRUCTION UPDATE

Construction Progress Update 6

CONSTRUCTION GALLERY

Bathrooms 10

Kitchens 12

Apartments 14

THE ESSENCE OF
INSPIRED LIVING

INTRODUCTORY MESSAGE



“Construction work has been progressing ahead of schedule and the building’s sleek modern design is now showing our vision and what everyone was anticipating from this development.”

Welcome to the spring 2017 Essence of Dilmunia quarterly Newsletter. As part of our ongoing commitment to our customers we are delighted to bring you this series of quarterly reports which will keep you informed about progress on your new home. Throughout our journey to completion we will be bringing you regular updates and enable you to see your building taking shape within this beautiful development.

With two full years passing since ground break, I am delighted to report that construction is well under way at site. Construction work has been progressing ahead of schedule and the building’s sleek modern design is now showing our vision and what everyone was anticipating from this development. Last quarter focus was to move forward with the interior works of the project, from mechanical to finishing works such as painting, flooring, ceiling, kitchen, lighting and many more details. During this quarter we have taken huge strides on all of these fronts and work is advancing significantly to the higher floors of the building. Apartments are gradually completed and locked waiting for final snagging inspections. Light fixtures fixed, ceilings closed, kitchens installed, bathrooms completed, doors installed and locked. Common areas also advanced significantly, pools are tiled and fixed, and all the recreation areas are well under way to be completed in the coming quarter.

Moving ahead in construction, we will work as hard and continue our momentum to complete interior works on the remaining higher floors.

GOING FORWARD

Progress at Essence of Dilmunia is continuously monitored to ensure that standards on site are kept high. Weekly meetings include all involved parties and contractors insure that work is done on schedule and to the required high standards.

As construction work for the development’s stunning Essence of Dilmunia draws closer, our purpose and commitment to excellence will differentiate Essence of Dilmunia from other projects. Our ambition to create the highest-quality residential development will ensure that we will build an enduring legacy for Bahrain. No doubt the coming months will be challenging, however, we will continue to execute highest- quality work to support your development and investment.

AHMED ALQAED



CONSTRUCTION PROGRESS UPDATE

CONSTRUCTION PROGRESS UPDATE

FINAL STAGES

Finishing Touches Being Applied at Essence of Dilmunia

We last checked in on the construction progress of Essence a few months ago when we marked a major milestone with the completion of the block work and plastering. The new development, now seeing some of the last of its finishing touches applied, with the most visible ongoing progress along the building's exterior involves the installation of the balcony glass doors, and black paint mimicking the tone of the aluminum framing and dark glass exterior to give an effect of continuity along the building. As it shows in the pictures, wooden separations have been installed between apartments all adding to the natural materials used in the building giving warmth and privacy to the balcony.

Work is continuing in the apartments within the building as well. The Apartments are getting their final paint work done, as well as the installation of kitchen cabinets are well in progress. The bathrooms are completed with all fittings and sanitary ware, the full shipment of doors has arrived and installation already has advanced to the higher floors. With everything completed in the

apartments, gradually doors are locked with only snagging and final inspection remaining.

Work is continuing as well in the amenity spaces within the building. The sixth floor infinity pool recently had its floor tilling finishes installed. On other levels, the completion of the indoor Separate Gyms and Pools recently began and progressing significantly, the installation of equipment is expected to follow during the coming weeks.

With all the work happening throughout the building, residents of Essence's 302 units will soon have their keys in hand. Once moved in, they will have access to a wide range of amenity spaces, including a rooftop garden with five different pools, a private cinema, and separate fitness areas for ladies & gents, and many more facilities.









PART OF



AHMED ALQAEED
GROUP

Essence of Dilmunia Newsletter
Spring 2017

Ahmed AlQaed Group S.P.C
P.O.Box 11050
Manama, Kingdom of Bahrain
Tel. +973 77 36 77 77
Fax +973 17 82 62 70
Sales@essenceofdilmunia.com
www.essenceofdilmunia.com
